

EN - #1 in proven accuracy by more than 100 peer-reviewed published clinical studies  
CN - 经 100 多项同行评审的已发表临床研究证明, 其准确度排名第一

## Quickstart - 快速入门

EN - How to use the TAT-2000 in 5 easy steps  
CN - 如何通过 5 个简单步骤使用 TAT-2000



EN - Do **NOT** push the scan button before starting the measurement.

**This is not an on/off button**

**CN - 开始测量前, 请勿按下扫描按钮。这并不是开/关按钮**



EN - Brush hair aside if covering the temporal artery area. Place the probe flush on the center of the head

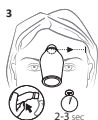
**CN - 如果头发覆盖颞动脉区域, 请将其梳至旁侧。请将探头平齐放在头部中央位置**



EN - Press scan button, keep button depressed throughout the measurement

**CN - 按下扫描按钮, 并在整个测量过程中一直按住按钮**

**Continue on back - 请接背面**



**EN** - Gently slide the probe from the middle of the head towards the hair line in 2-3 seconds

**CN** - 在 2-3 秒内, 从头部中央向发际线轻轻滑动探头



**EN** - Do **NOT** scan over the hair with the TAT-2000, brush hair aside before measuring

**CN** - 请勿在有头发覆盖部位使用 TAT-2000 进行扫描, 测量前请将头发梳至旁侧



**EN** - Slide the thermometer straight across the forehead, **NOT** down the side of the face

**CN** - 请将温度计横向滑过前额, 请勿向下滑至面部一侧



**EN** - Keep scan button pressed, and next measure behind the earlobe

**CN** - 保持按住扫描按钮, 然后测量耳垂后面



**EN** - Release button and read temperature

**CN** - 松开按钮并读取温度



**EN** - Scan QR code for instruction videos and manuals

**CN** - 扫描二维码, 获取教学视频和手册

**EN** - In the box you will find a more detailed instruction manual

**CN** - 包装盒中有更详细的使用说明书